

# Grand Views Shutters

Aluminum Powder Coated



WINDOWS · DOORS · SHUTTERS

www.grandviews.com

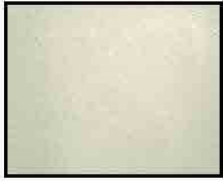


~ Stock Powder Coating Colors ~

White



Ivory



Wheat



Beige



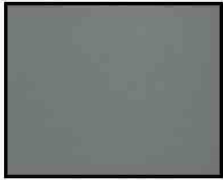
Taupe



Weatherable Gray



Gray



Weatherable Dark Gray



Storm Gray



Sudan Brown



Koko Brown



Chestnut



Bronze Age III



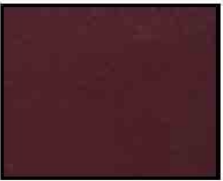
Brick Red



Redwood



Wineberry



Military Blue



Thunder Blue



Steel Blue



Juniper Green



Ivy Green



Forest Green



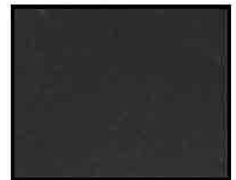
Sherwood Green



Charleston Green



Bronze



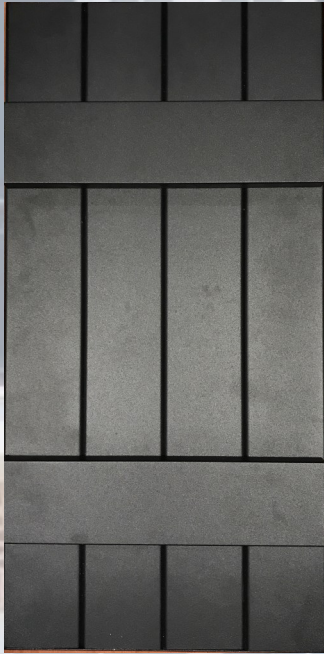
Black



# Drinking Chamber Wall



# Open Back



**Board Sizes Available:**

**3" / 4" / 5"**

# Closed Back & Impact



**Board Sizes Available:**

**3" / 4" / 5"**



**Full Louver**

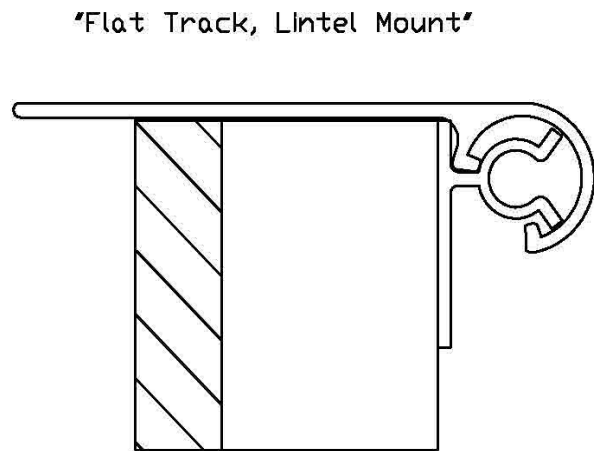
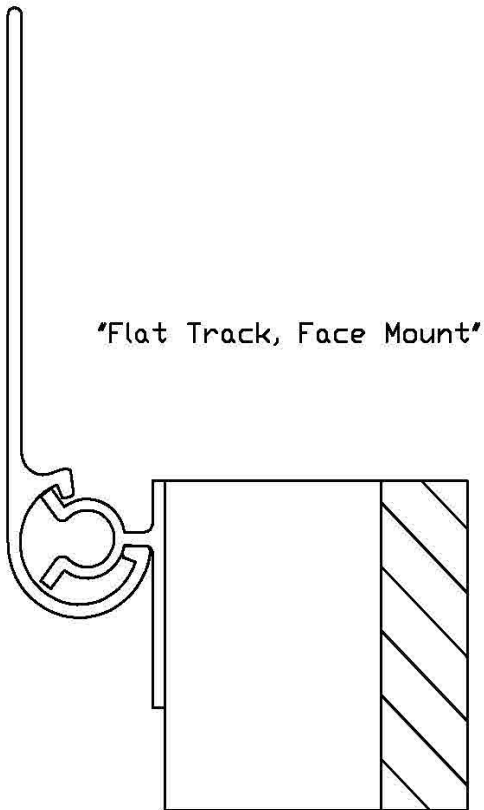
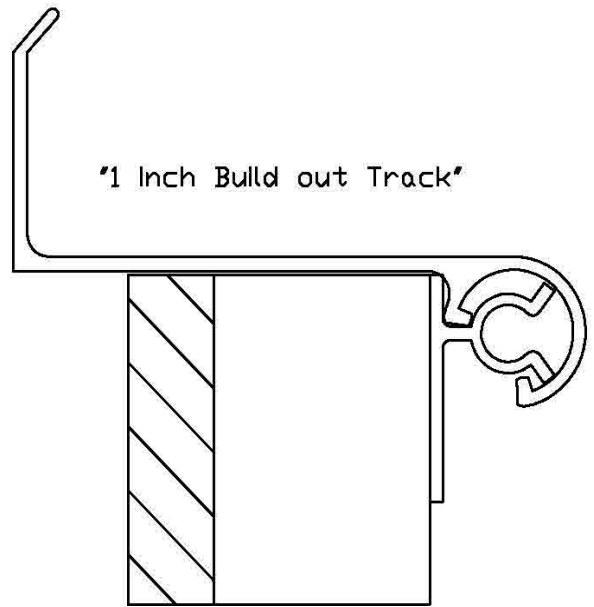
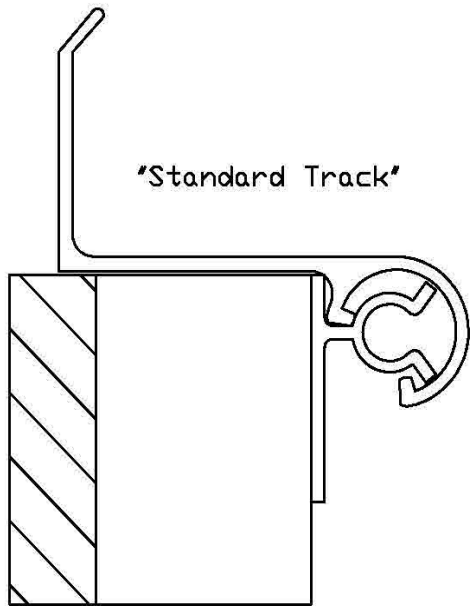


**Half Louver**



**Half Louver**







Hurricane Rated



Adjustable 4" Wide Louver



Shutter Hinges



Bahama Hinge

Continuous Hinge

Bahama Arms

Hook & Eye



Pintles

Lag Pintles

Narrow Pintles

Jamb Mount Pintles



Slidebolts

Lockable Hinges

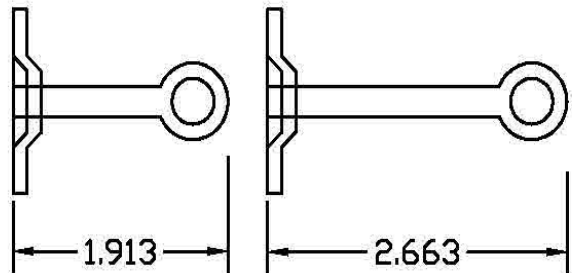
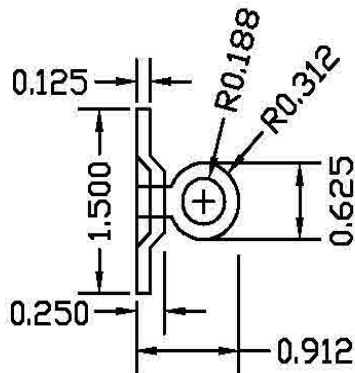
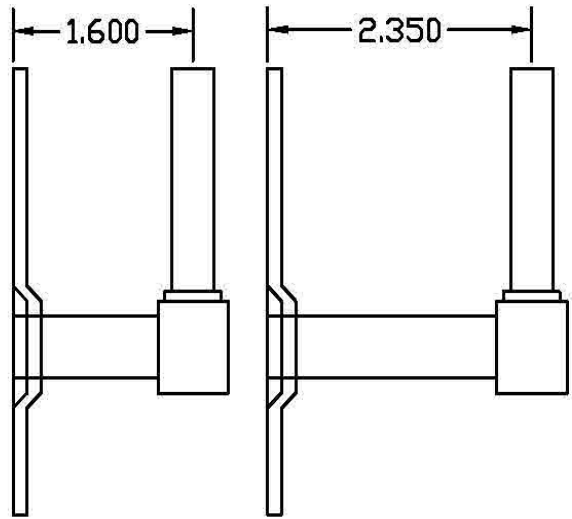
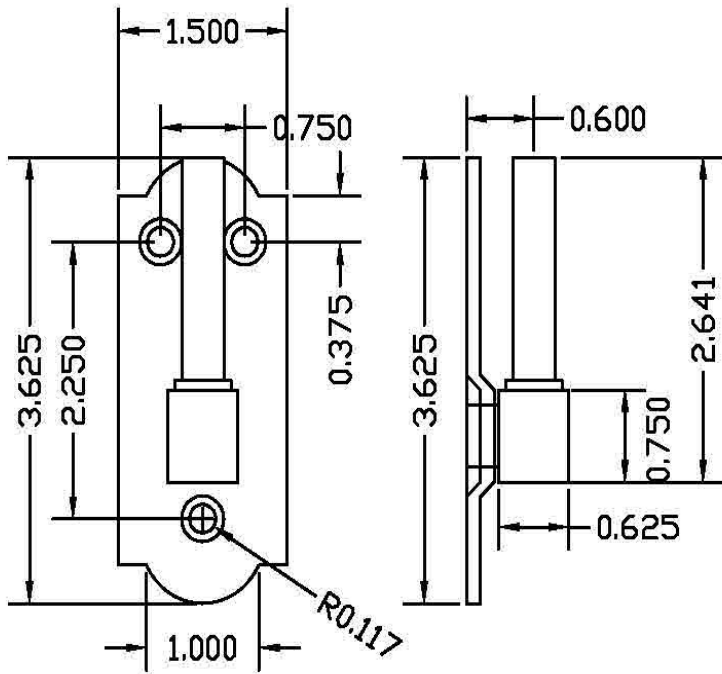
Clavos



# PINTLE ANCHOR SCHEDULE

To solid block or brick  
To hollow block or brick

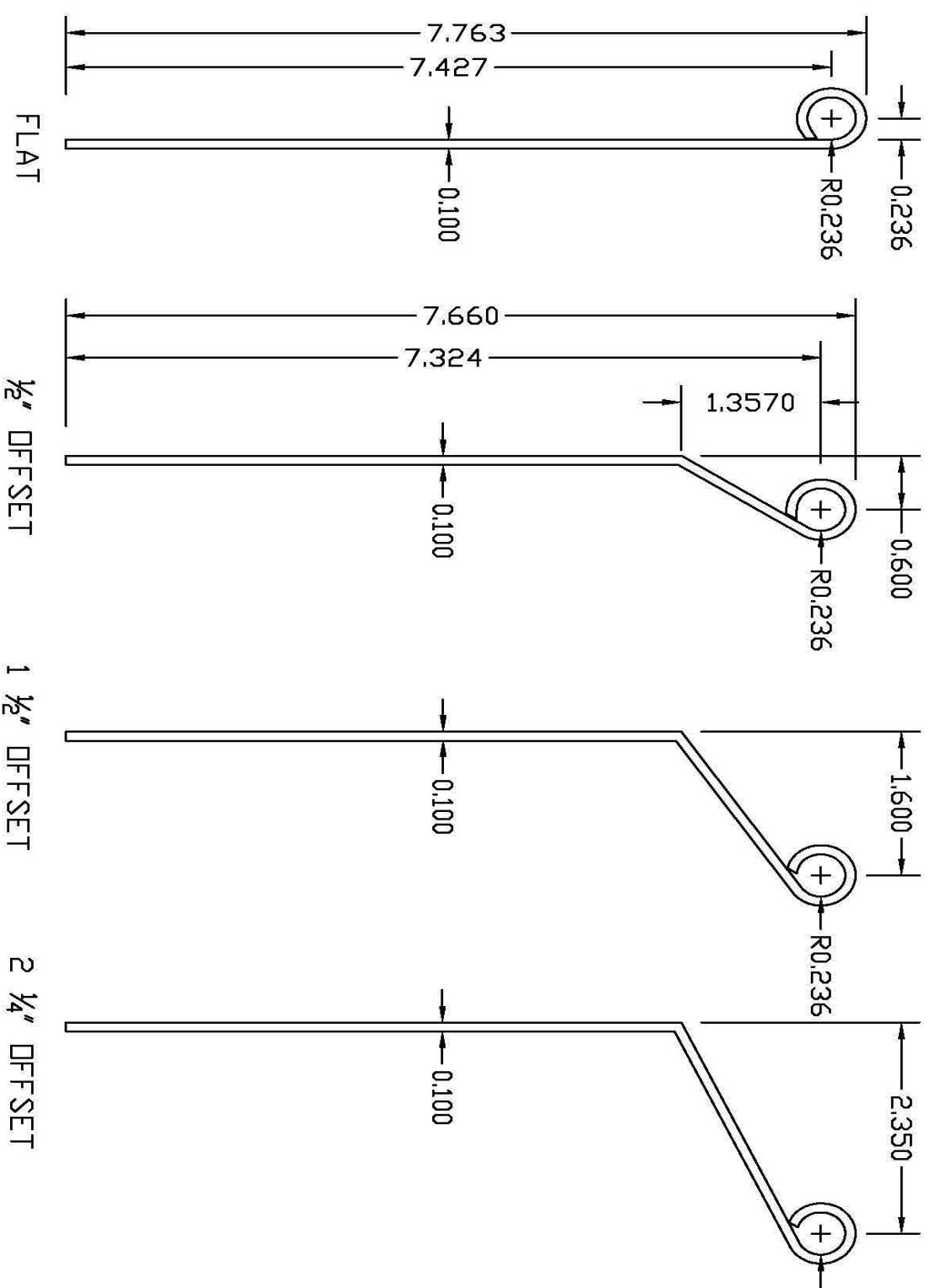
- $\frac{3}{16} \times 1 \frac{3}{4}$ " Embed Tapcons
- 

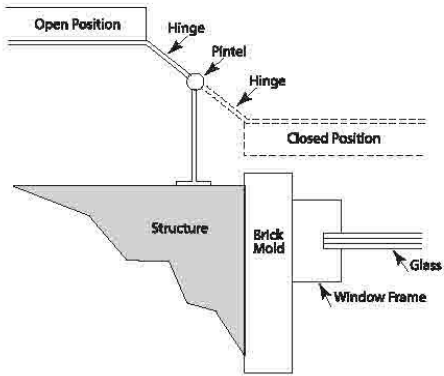


$\frac{1}{2}$ " OFFSET

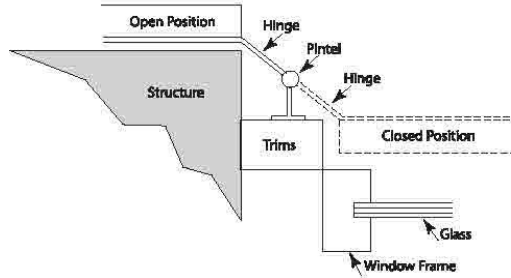
1  $\frac{1}{2}$ " OFFSET

2  $\frac{1}{2}$ " OFFSET

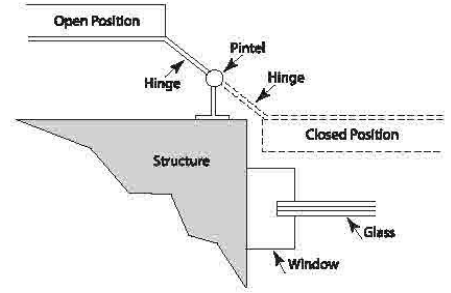




**Projected**



**Recessed**



**Flush**

## HINGE REQUIREMENTS

shutter height	12" to 48"	49" to 96"	97" to 108"
hinge requirement	2	3	4



## **Board & Batten, Louver, and Bahama Shutters**

**Grand Views warrants all products against defects in material and inferior workmanship for a period of one year from the date of products installation. Should any part or component not function as intended during the warranty period, and manufacturer is notified in writing within thirty (30) days, after the appearance of the alleged defect, manufacturer will repair or replace the defective part or component at no charge for the part and labor.**

**This warranty does not apply in cases of abuse, misuse, misapplication, or alteration of the product installed. Manufacturer disclaims all warranties expressed or implied including without limitation the warranties by affirmation, promise, or merchantability, for a particular purpose to third party users.**

**Liability of the Manufacturer's is limited to the purchase price. THE MANUFACTURER SHALL IN NO EVENT BE LIABLE FOR INCIDENTAL OR CONSEQUENTIAL DAMAGES OF ANY KIND WHATSOEVER, WHETHER ALLEGED TO HAVE RESULTED FROM DELAY IN DELIVERY OF NON-COMFORMING MATERIAL, DEFICIENCIES IN MATERIAL, OR ANY OTHER CAUSE WHATSOEVER, AND WHETHER ARISING FROM BREACH OF CONTRACT, BREACH OF WARRANTY, TORT, INCLUDING NEGLIGENCE, STRICT LIABILITY OR OTHERWISE. The remedy set forth above shall be exclusive.**

**This warranty is not effective unless signed and dated by the installing dealer at time of installation, countersigned by the Purchaser and the original form sent to the Manufacturer by certified mail within (3D) days of installation. This warranty extends to the original Purchaser and installation address and cannot be assigned or otherwise transferred.**

**Manufacturer Authorized Dealer:** \_\_\_\_\_

**Installation Date:** \_\_\_\_\_

**Products Installed:** \_\_\_\_\_

**Product Installed By:** \_\_\_\_\_





GRAND VIEWS

by Tait

WINDOWS · DOORS · SHUTTERS

[www.grand-views.com](http://www.grand-views.com)

3893