

Grand Views Shutters

Aluminum Powder Coated



WINDOWS · DOORS · SHUTTERS
www.grand-views.com

3102 Kirkman St. ~ Lake Charles, La 70601 ~ 337-564-6410

www.grand-views.com

Aluminum Shutters

~ Stock Powder Coating Colors ~

White	Ivory	Wheat	Beige	Taupe
				
Weatherable Gray	Gray	Weatherable Dark Gray	Storm Gray	Sudan Brown
				
Koko Brown	Chestnut	Bronze Age III	Brick Red	Redwood
				
Wineberry	Military Blue	Thunder Blue	Steel Blue	Juniper Green
				
Ivy Green	Forest Green	Sherwood Green	Charleston Green	Bronze
				
Black				
				

Color Names in *Red* are a textured finish. Color Names in *Black* are a smooth finish.

Custom Colors are available for an additional charge.

~ Bi-Folding Shutter Wall ~



~ Decorative Board & Batten ~

Open Back



Shutter Front



Shutter Back

Board Sizes Available:

3" / 4"



Approved

*** Approved as a faux shutter only ***



~ Board & Batten ~

Closed Back & Impact



Shutter Front

Shutter Back

Board Sizes Available:

3" / 4" / 5"



Approved

*** Approved for all subdivisions in Graywood ***

~ Decorative Louvered ~



Shutter Front Side



**Half Louver
C-Blade**



*** Approved as a faux shutter only ***

Shutter Back Side



**Half Louver
C-Blade**

~ Louvered ~



Shutter Front Side



**Full Louver
Hollow Blade**



*** Approved for all subdivisions in Graywood ***

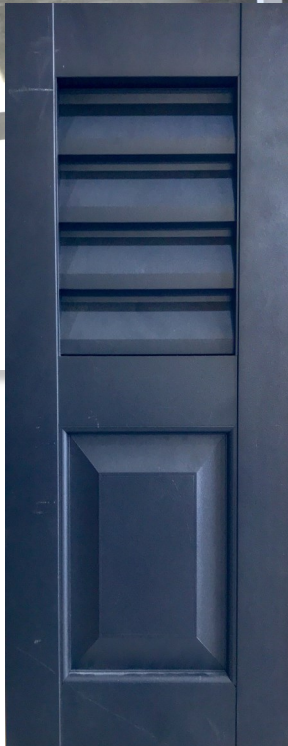
Shutter Back Side



**Full Louver
Hollow Blade**

~ Decorative Raised Panel ~

Open Back



*** Approved as a faux shutter only ***

~ Decorative Raised Panel ~

Closed Back



Shutter Front

Shutter Back



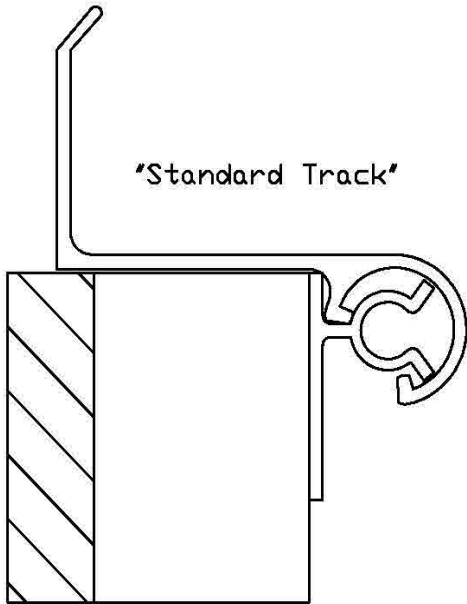
*** Approved for all subdivisions in Graywood ***

~ Bahama ~

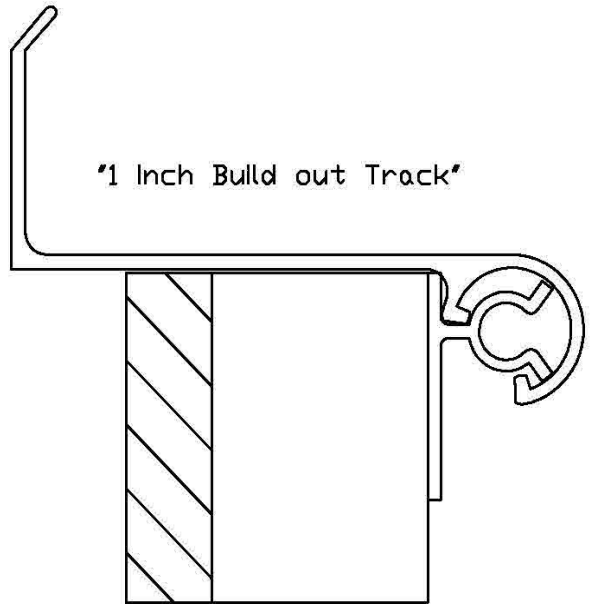


Bahama Hinge Options

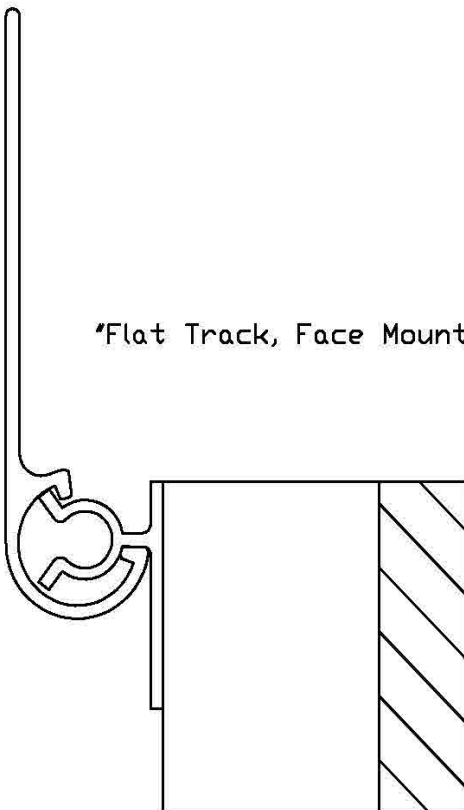
"Standard Track"



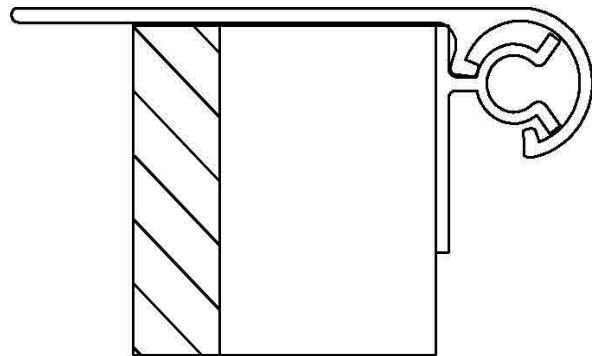
"1 Inch Build out Track"



"Flat Track, Face Mount"



"Flat Track, Lintel Mount"



A photograph of a hurricane-rated adjustable louver installed on a brick wall. The louver is white with horizontal slats and is mounted on a dark brown brick wall. The wall also features a section of stone veneer below the louver. A dark brown downspout is visible to the left of the louver. The image is split vertically, showing two identical views of the louver.

Hurricane Rated

Adjustable 4" Wide Louver

~ Optional Stock Shutter Hardware ~



Shutter Hinges



Bahama Hinge

Continuous Hinge

Bahama Arms

Hook & Eye



Pintles

Lag Pintles

Narrow Pintles

Jamb Mount Pintles



Slidebolts

Lockable Hinges

Clavos



Shutter Dogs

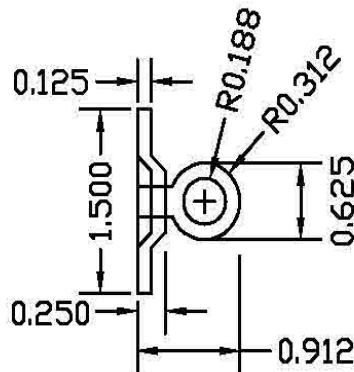
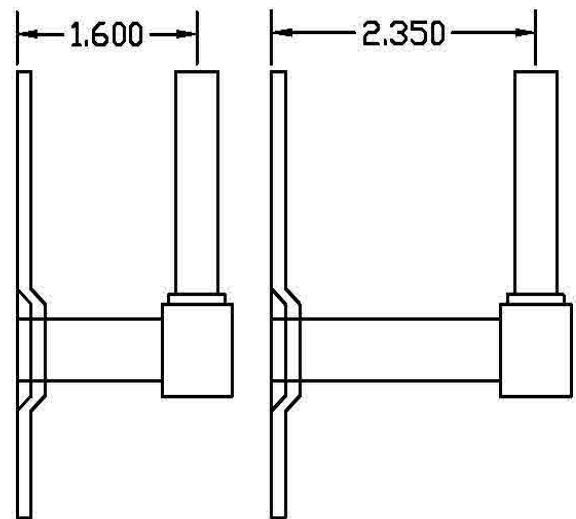
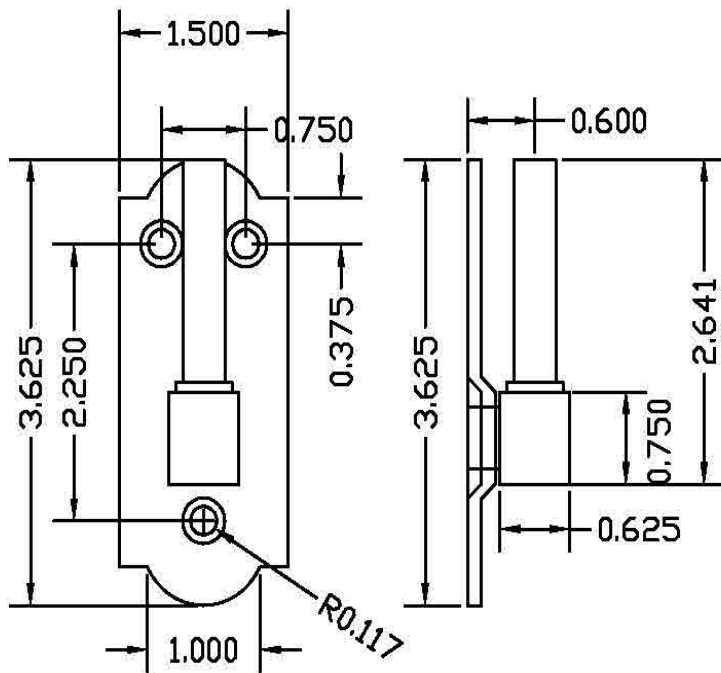
~ Pintle Offsets ~

PINTLE ANCHOR SCHEDULE

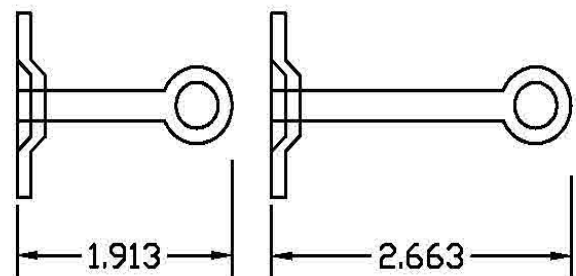
To solid block or brick
To hollow block or brick

- $\frac{3}{16} \times 1 \frac{3}{4}$ " Embed Tapcons

-



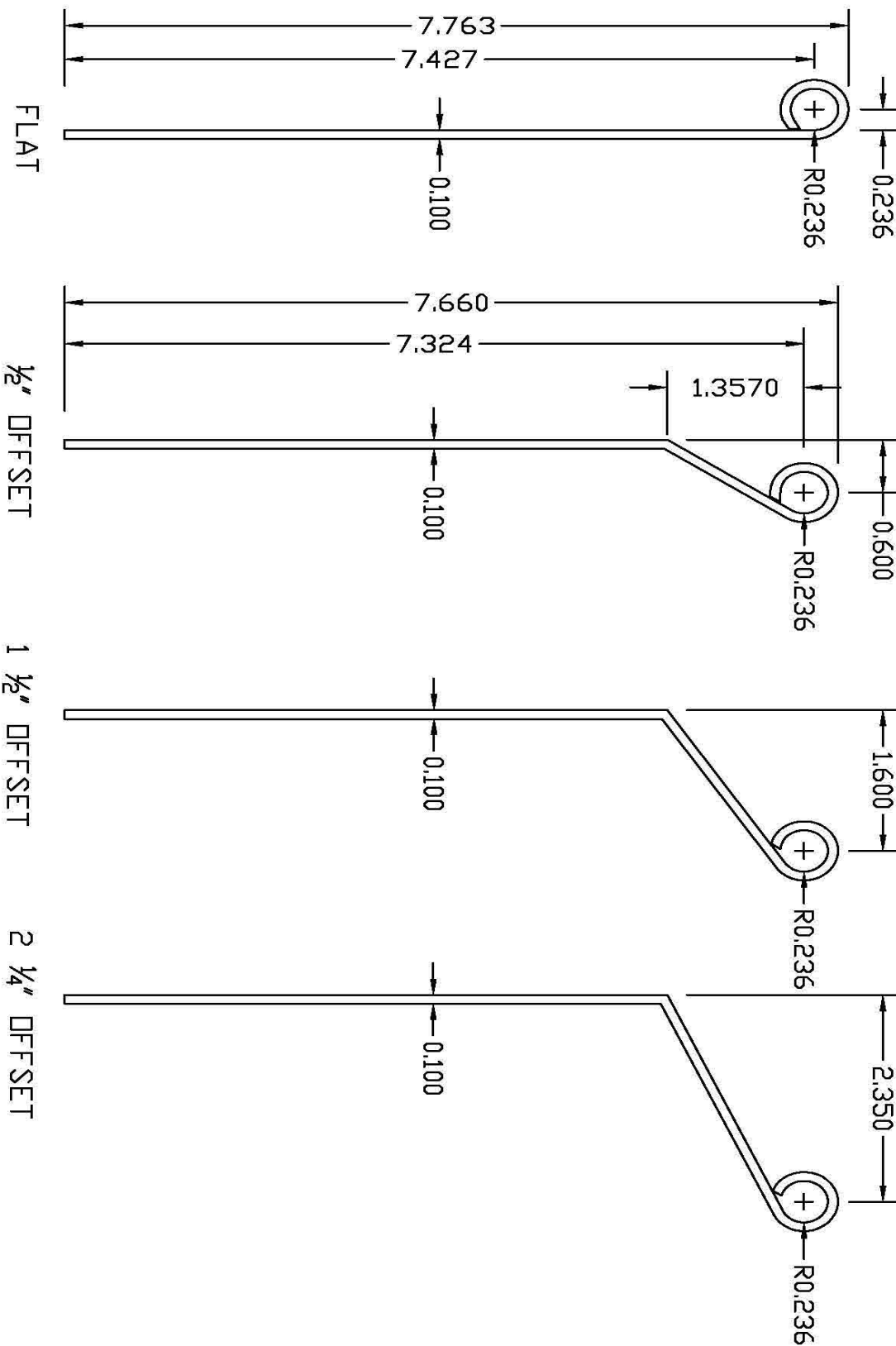
$\frac{1}{2}$ " OFFSET



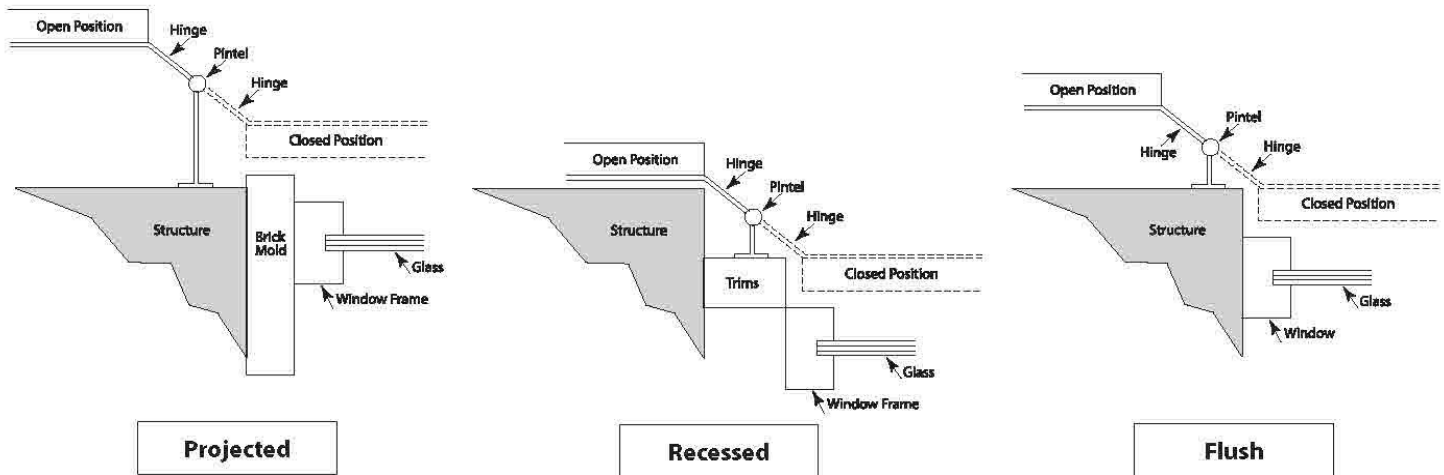
1 $\frac{1}{2}$ " OFFSET

2 $\frac{1}{4}$ " OFFSET

~ Strap Offsets ~



~ Common Installation Options ~



HINGE REQUIREMENTS

shutter height	12" to 48"	49" to 96"	97" to 108"
hinge requirement	2	3	4



Manufacturer's One (1) Year limited Warranty

Board & Batten, Louver, and Bahama Shutters

Grand Views warrants all products against defects in material and inferior workmanship for a period of one year from the date of products installation. Should any part or component not function as intended during the warranty period, and manufacturer is notified in writing within thirty (30) days, after the appearance of the alleged defect, manufacturer will repair or replace the defective part or component at no charge for the part and labor.

This warranty does not apply in cases of abuse, misuse, misapplication, or alteration of the product installed. Manufacturer disclaims all warranties expressed or implied including without limitation the warranties by affirmation, promise, or merchantability, for a particular purpose to third party users.

Liability of the Manufacturer's is limited to the purchase price. THE MANUFACTURER SHALL IN NO EVENT BE LIABLE FOR INCIDENTAL OR CONSEQUENTIAL DAMAGES OF ANY KIND WHATSOEVER, WHETHER ALLEGED TO HAVE RESULTED FROM DELAY IN DELIVERY OF NON-COMFORMING MATERIAL, DEFICIENCIES IN MATERIAL, OR ANY OTHER CAUSE WHATSOEVER, AND WHETHER ARISING FROM BREACH OF CONTRACT, BREACH OF WARRANTY, TORT, INCLUDING NEGLIGENCE, STRICT LIABILITY OR OTHERWISE. The remedy set forth above shall be exclusive.

This warranty is not effective unless signed and dated by the installing dealer at time of installation, countersigned by the Purchaser and the original form sent to the Manufacturer by certified mail within (3D) days of installation. This warranty extends to the original Purchaser and installation address and cannot be assigned or otherwise transferred.

Manufacturer Authorized Dealer: _____

Installation Date: _____

Products Installed: _____

Product Installed By: _____

Purchaser: _____







WINDOWS • DOORS • SHUTTERS
www.grand-views.com